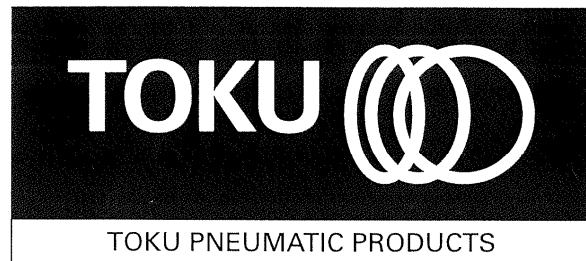


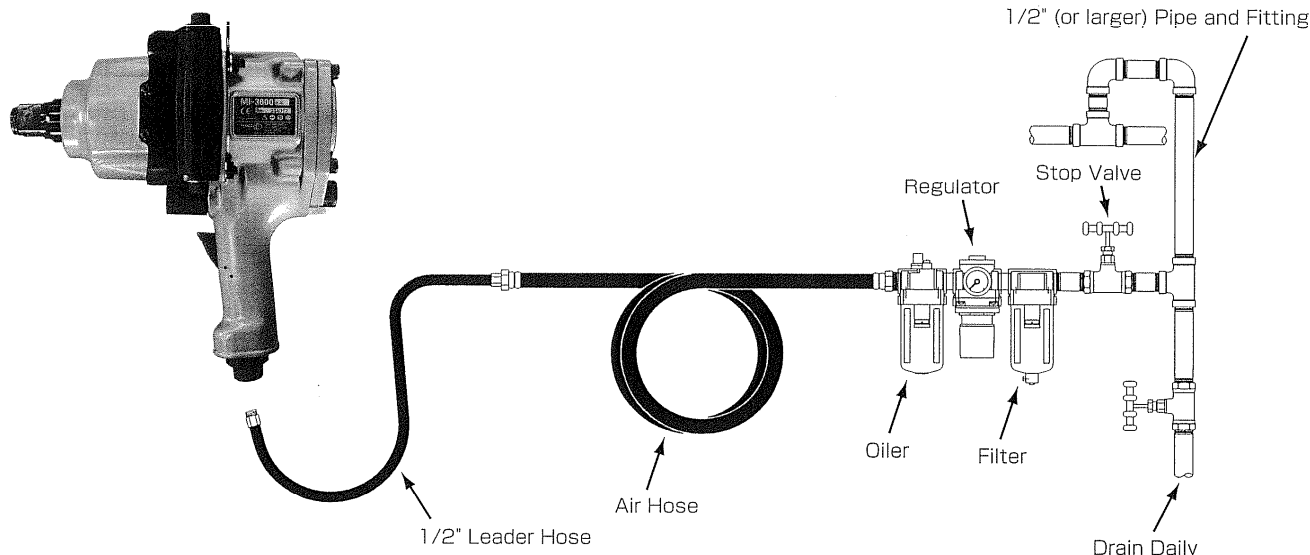
# MAINTENANCE INSTRUCTIONS 1" IMPACT WRENCH MODEL MI-3800P



## AIR HOSE AND HOSE CONNECTION:



[www.air-allied.com.au](http://www.air-allied.com.au)



## OPERATING INSTRUCTIONS

### “WARNING”

1. ALWAYS USE APPROVED EYE PROTECTION WHEN OPERATING THIS TOOL.
2. ALWAYS USE IMPACT SOCKETS IN GOOD CONDITION. SOCKETS IN BAD CONDITION REDUCE IMPACT POWER AND COULD ALSO SHATTER AND CAUSE POSSIBLE PERSONAL INJURY. NEVER USE HAND SOCKETS.
3. ALWAYS USE THE SIMPLEST HOOKUP POSSIBLE. LONG, SPRINGY EXTENSION BARS ABSORB IMPACT AND COULD BREAK LOOSE AND CAUSE POSSIBLE PERSONAL INJURY.
4. ALWAYS DIRECT EXHAUST AWAY FROM YOURSELF AND OTHERS IN THE AREA.
5. ALWAYS DISCONNECT TOOL WHEN NOT IN USE.

### LUBRICATION

To flush out gum and dirt :

1. Daily before and after each shift, pour a liberal quantity of gum solvent oil into air line.
2. Connect tool to air line. Operate tool.
3. Repeat procedure before storing.
4. Monthly, check grease in impact unit.
5. At the timing of service, check grease class and q'ty if they are in accordance with the description below.
  - Grease class : NLGI No.2 (containing molybdenum)
  - Quantity in impact unit : 25 g ~ 35 g

### AIR SUPPLY

1. Supply tool with 0.6MPa of clean, dry air. Higher pressure drastically reduces tool life and can void warranty.
2. See diagram above for Pipe, Hose and Fitting size.
3. When using two or more tools, Air Hoses should be larger than Leader Hose.

### LOSS OF POWER/ERRATIC ACTION (possible causes)

1. Reduced compressor output.
2. Excessive drain on air line.
3. Moisture or restricted pipe, hose or fittings.
4. Improper size or poor condition of pipe, hose or fittings
5. Dirt or gum deposits cut tool power. To correct this, check and clean air strainer, then repeat lubrication procedure. (If outside conditions are in order, disassemble tool, replace worn or damaged parts, clean, assemble and lubricate.)

### REPLACEMENT PARTS

Always use GENUINE TOKU TOOLS Replacement Parts.  
When replacement parts are required, order by Part No. and Description in the Parts List.

### SOUND LEVEL

Sound Level dB(A) in accordance with ISO15744 : Pressure 94  
Power 105

### VIBRATIONS LEVEL

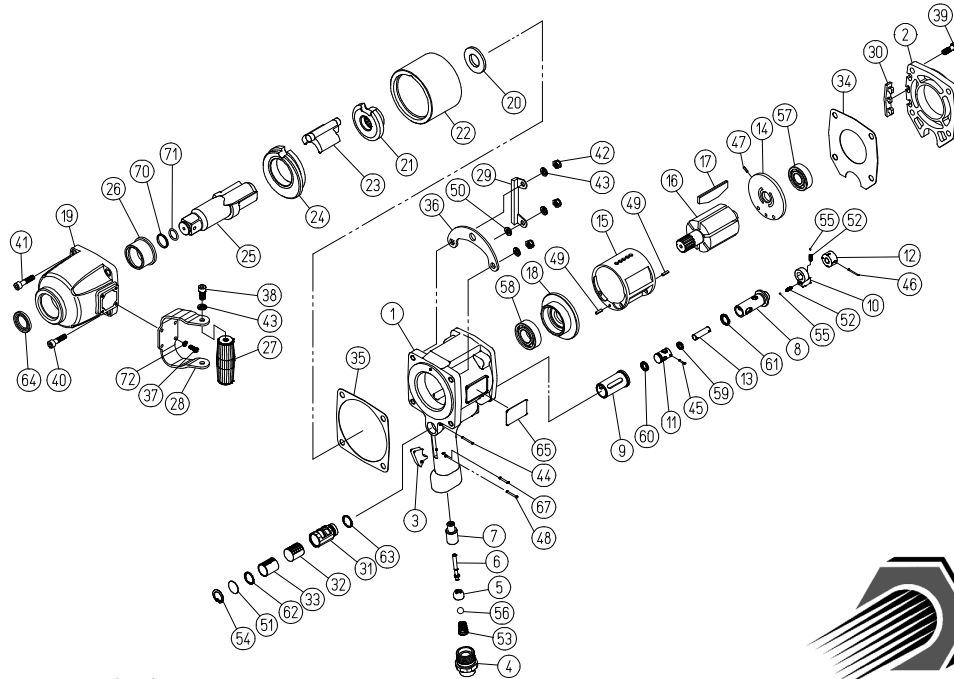
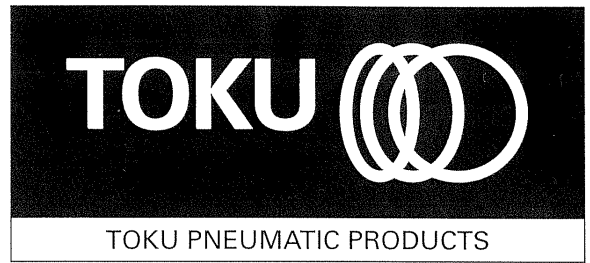
Vibration m/s<sup>2</sup> in accordance with ISO8662-7 : 6.6

No.12

# MAINTENANCE INSTRUCTIONS

## 1" IMPACT WRENCH

# MODEL MI-3800P



[www.air-allied.com.au](http://www.air-allied.com.au)

### PARTS LIST MI-3800P(RH)

Symbol No.	Parts No.	Description	Q'ty Req'd
001	43-16-35-010	Motor Housing	1
002	43-16-35-350	Housing Cover	1
003	43-12-67-130	Trigger	1
004	46-11-60-90B	Air Inlet (PT)	1
005	13-55-05-002	Throttle Valve	1
006	46-11-61-045	Throttle Push Rod	1
007	46-11-61-035	Throttle Valve Bushing	1
008	46-11-62-105	Reverse Valve	1
009	46-11-62-115	Reverse Valve Bushing	1
010	46-11-62-125	Reverse Valve Lever	1
011	46-11-62-405	Control Valve	1
012	46-11-62-425	Control Valve Knob	1
013	46-11-62-445	Control Valve Rod	1
014	43-12-66-370	Rear End Plate	1
015	43-12-66-360	Liner	1
016	43-16-61-390	Rotor	1
017	13-71-10-138	Vane	6
018	43-12-66-380	Front End Plate	1
019	43-12-66-520	Clutch Housing	1
020	43-12-66-480	Thrust Plate	1
021	43-12-66-430	Cam	1
022	43-12-66-440	Cage	1
023	43-16-61-450	Dog	1
024	43-12-66-470	Cage Bushing	1
025	43-16-44-900	Anvil Shank S (RH)	1
026	43-16-61-530	Housing Bushing	1
027	43-12-66-620	Grip	1
028	43-16-81-550	Dead Handle	1
029	13-62-01-015	Protector (F)	1
030	13-66-06-001	Protector (R)	1
031	46-11-67-805	Exhaust Deflector	1
032	46-19-40-428	Silencer	1
033	46-11-68-355	Filter	1
034	46-11-68-535	Motor Housing Packing	1
035	13-61-04-002	Clutch Housing Packing	1
036	46-11-67-945	Frying Plate	1
037	13-19-05-014	Hex. Socket Button Head Screw M5X14	4
038	13-19-08-016	Hex. Socket Button Head Screw M8X16	2
039	13-17-08-030	Hex. Socket Head Cap Screw M8X30	4
040	13-17-08-035	Hex. Socket Head Cap Screw M8X35	1
041	13-17-08-040	Hex. Socket Head Cap Screw M8X40	3
042	13-44-01-008	Hex. Nut M8	4
043	13-13-09-008	Washer M8	6
044	46-97-11-660	Pin 2.5X26	1
045	46-97-11-140	Pin 2X14	1
046	13-06-02-024	Spring Pin 2X24	1
047	13-06-03-010	Spring Pin 3X10	1
048	13-06-03-024	Spring Pin 3X24	1
049	13-06-04-014	Spring Pin 4X14	2

Symbol No.	Parts No.	Description	Q'ty Req'd
050	46-97-50-650	Spacer	1
051	46-97-56-030	Exhaust Plate	1
052	46-97-60-270	Spring 3X11	2
053	13-08-08-002	Throttle Valve Spring 10X15X25	1
054	13-03-01-024	Retaining Ring H-24	1
055	13-05-02-008	Steel Ball 1/8	2
056	13-05-05-028	Polyurethan Rubber Ball 7/16	1
057	13-01-07-005	Bearing 6204	1
058	13-01-09-006	Bearing 6205ZZ	1
059	13-11-01-008	O-Ring P-10	1
060	13-11-01-012	O-Ring P-12	1
061	13-11-01-016	O-Ring P-16	1
062	13-11-01-018	O-Ring P-20	1
063	13-11-03-016	O-Ring S-20	1
064	13-12-02-048	Oil Seal VB-40525	1
065	13-73-05-034	Name Plate	1
067	13-06-03-020	Spring Pin 3X20	1
070	13-08-03-144	Socket Retainer Ring	1
071	13-11-05-013	O-Ring 6227-13	1
072	13-13-10-005	Spring Washer M5	4
	43-16-44-90C	Anvil Shank S (RH) CP (Incl. Symbol No.25,70&71)	(1CP)
	43-16-35-01B	Motor Housing CP (Incl. Symbol No.1,7&8)	(1CP)
	43-16-35-52C	Clutch Housing CP (Incl. Symbol No.19,26&64)	(1CP)
	43-16-81-55C	Dead Handle CP (Incl. Symbol No.27,28,38&43)	(1CP)
<b>MI-3800PL (RH)</b>			
025	43-16-43-900	Anvil Shank L (RH)	1
070	13-08-03-144	Socket Retainer Ring	1
071	13-11-05-013	O-Ring 6227-13	1
	43-16-43-90C	Anvil Shank L (RH) CP (Incl. Symbol No.25,70&71)	(1CP)
(004)	46-11-60-91B	Air Inlet (NPT)	(1)